

**FIRE PROTECTION
START/STOP FIRE PUMP
PROCEDURE**

**REV. N
07/27/99
1 OF 5**

OBJECTIVE

To put in service & stop the Electrical Fire Pump 9WSE-P-2

SAFETY AND ENVIRONMENTAL

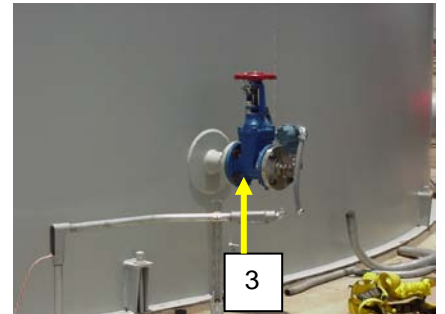
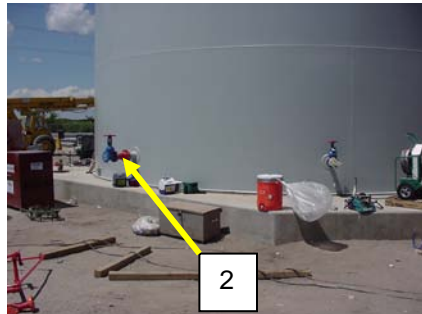
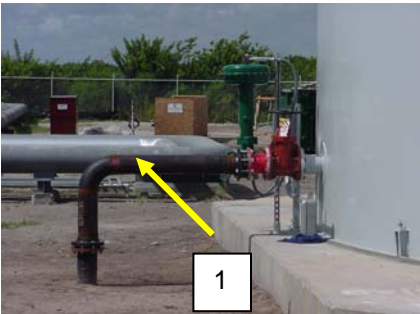
Plant required personal protective equipment (i.e. Safety glasses, hard hat, etc.)

PREREQUISITES

Storage Tank with adequate water level.

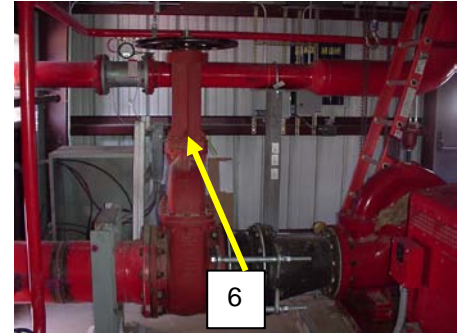
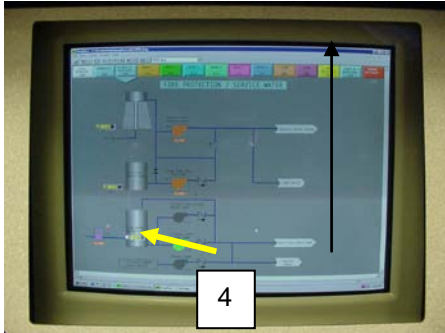
GENERAL PROCEDURE

Start-Up Main Electrical Fire Pump (9WSE-P-2) Start-Up and Shutdown

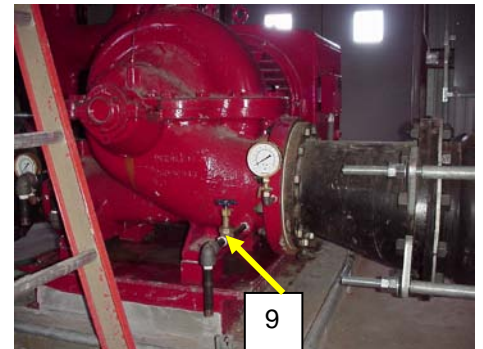
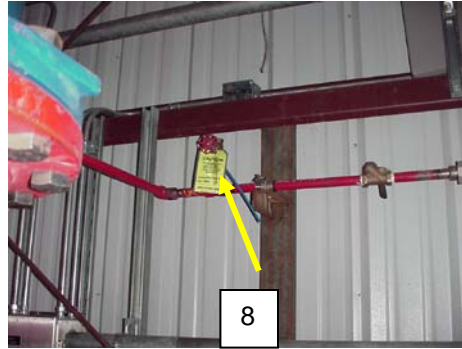
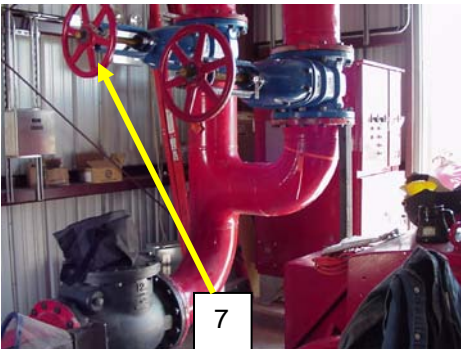


- 1. Check **potable water** make-up **open** to storage tank 9WSE BV _____
- 2. Check storage **tank drain closed** 9WSE BV 1015 _____
- 3. Check storage tank **level transmitter open** 9WSE BV 15 _____

FIRE PROTECTION
START/STOP FIRE PUMP
PROCEDURE

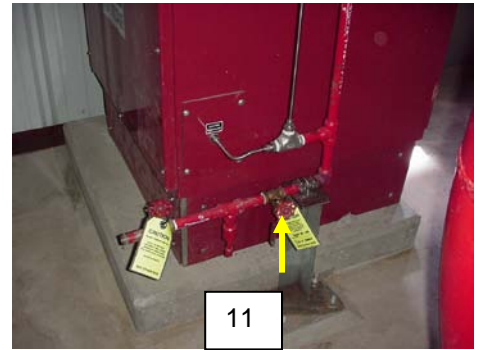
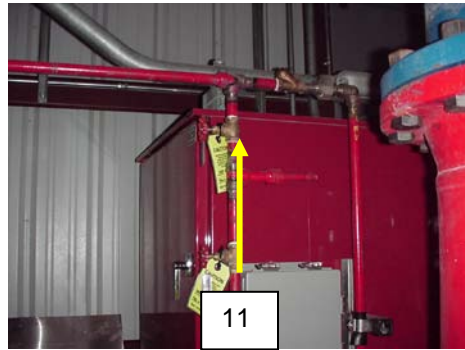
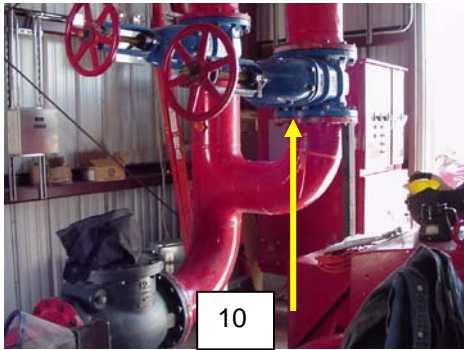


- 4. Check storage **tank level** (DCS) via radio _____
- 5. Check **open** storage tank **outlet valve** 9WSE BV 1 _____
- 6. Check **open** fire pump **suction valve** 9WSE BV 2 _____



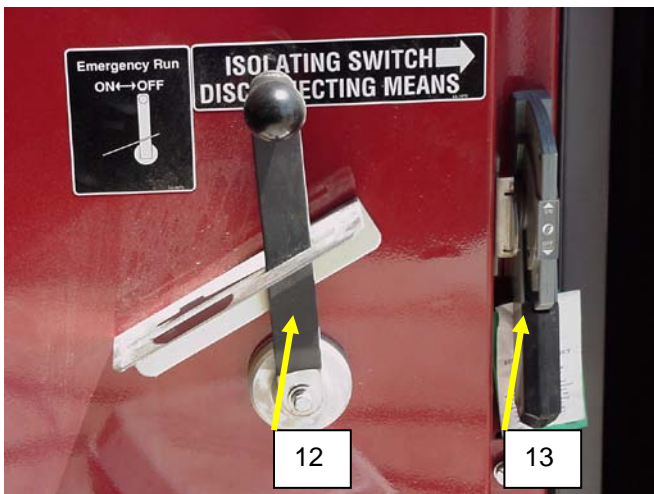
- 7. Check **open** fire pump **discharge valve** 9WSE BV 4 _____
- 8. Check **vent**, full of water 9WSE BV _____
- 9. Check pump **drain closed** _____

FIRE PROTECTION
START/STOP FIRE PUMP
PROCEDURE



10. Check **flow** test valve **closed** 9WSE BV 9

11. Check pressure sensing line **drains closed**, 9WSE BV 1006,
9WSE BV 1018



12. Check emergency run disconnect **off**

13. Check local disconnect **on**

14. Push fire pump **start** button

15. Verify flow through fire pump relief valve

**FIRE PROTECTION
START/STOP FIRE PUMP
PROCEDURE**

Shut Down Electric Fire Pump 9WSE-2

- 1. Push stop button on local control panel _____

Operator Checklist

Start Electric Fire Pump 9WSE-P-2

- 1. Check potable water make-up **open** to storage tank 9WSE BV _____
- 2. Check storage tank drain **closed** 9WSE BV 1015 _____
- 3. Check storage tank level transmitter **open** 9WSE BV 15 _____
- 4. Check storage **tank level** (DCS) via radio _____
- 5. Check **open** storage tank **outlet valve** 9WSE BV 1 _____
- 6. Check **open** fire pump **suction valve** 9WSE BV 2 _____
- 7. Check **open** fire pump **discharge valve** 9WSE BV 4 _____
- 8. Check **vent**, full of water 9WSE BV _____
- 9. Check pump **drain closed** _____
- 10. Check **flow** test valve **closed** 9WSE BV 9 _____
- 11. Check pressure sensing line **drains closed**, 9WSE BV 1006,
9WSE BV 1018 _____
- 12. Check emergency run disconnect **off** _____
- 13. Check local disconnect **on** _____
- 14. Push fire pump **start** button _____
- 15. Verify flow through fire pump relief valve _____

LOCATION

PROCEDURE NUMBER
Fire Protection-003

**FIRE PROTECTION
START/STOP FIRE PUMP
PROCEDURE**

**REV. N
07/27/99
5 OF 5**

Shut Down Electric Fire Pump 9WSE-2

1. Push stop button on local control panel
