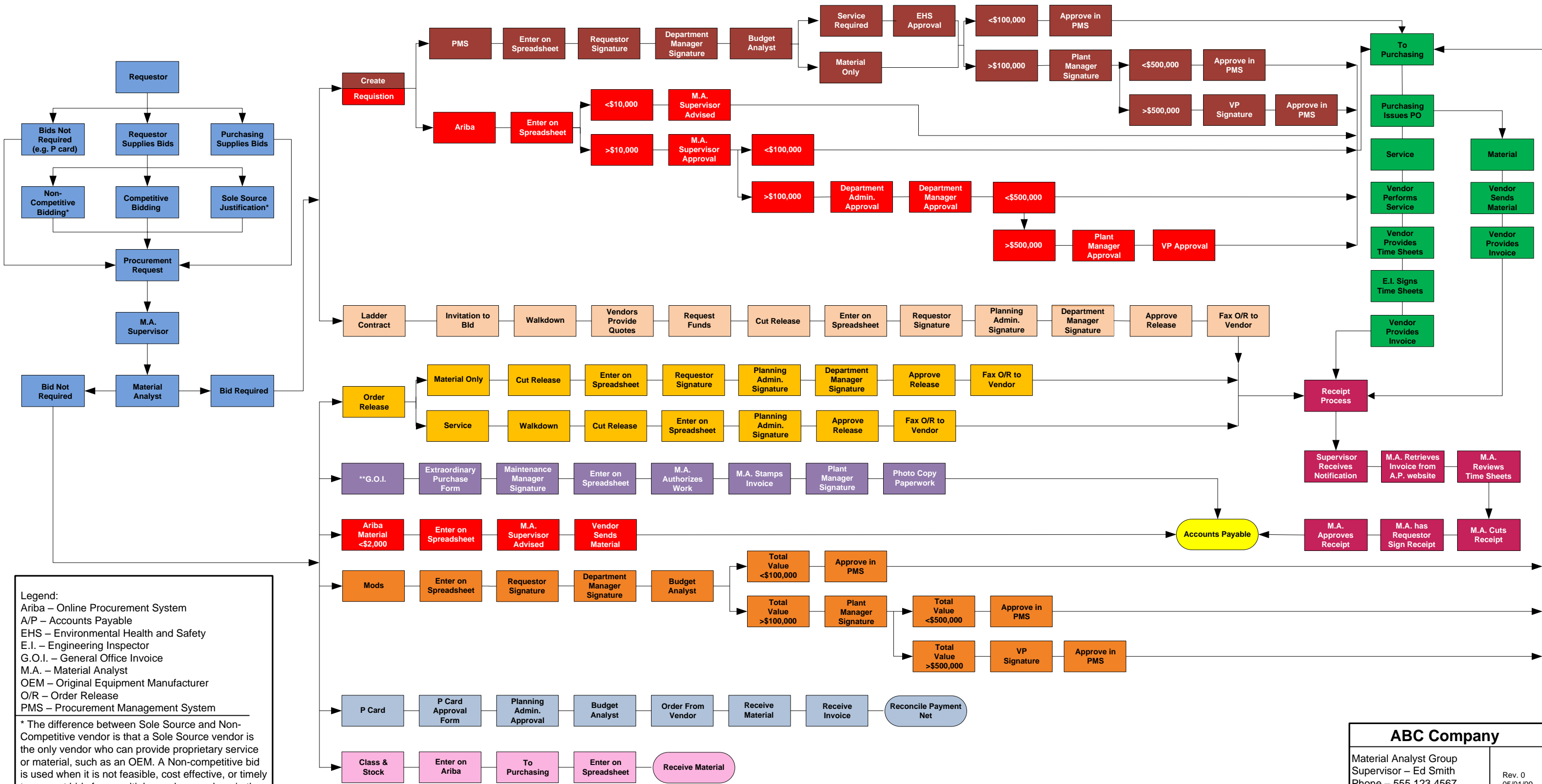


Material Procurement Process Flow



Legend:
 Ariba – Online Procurement System
 A/P – Accounts Payable
 EHS – Environmental Health and Safety
 E.I. – Engineering Inspector
 G.O.I. – General Office Invoice
 M.A. – Material Analyst
 OEM – Original Equipment Manufacturer
 O/R – Order Release
 PMS – Procurement Management System

* The difference between Sole Source and Non-Competitive vendor is that a Sole Source vendor is the only vendor who can provide proprietary service or material, such as an OEM. A Non-competitive bid is used when it is not feasible, cost effective, or timely to request bids from multiple vendors, such as in the case of an emergency.

** Old System – currently being converted to Ariba.

ABC Company	
Material Analyst Group Supervisor – Ed Smith Phone – 555.123.4567	Rev. 0 05/01/09